

UN-GGIM WEBINAR

14 MAY 2025

Linking land tenure and degradation: The role of cadastral data in supporting SDG 15.3.1 monitoring.

UNITED NATIONS COMMITTEE OF EXPERTS ON
GLOBAL GEOSPATIAL INFORMATION
MANAGEMENT

SDG indicator 15.3.1

ALEJANDRO RODRÍGUEZ FRÍAS

Linking land tenure and degradation: The role of cadastral data in supporting SDG 15.3.1 monitoring.

UNITED NATIONS COMMITTEE OF
EXPERTS ON GLOBAL GEOSPATIAL
INFORMATION MANAGEMENT

14 MAY 2025



SDG
15.3.1

Proportion of land that is degraded over total land area.

Land degradation is the “reduction or loss, in arid, semi-arid and dry sub-humid areas, of the biological or economic productivity and complexity of rainfed cropland, irrigated cropland, or range, pasture, forest and woodlands resulting from land uses or from a process or combination of processes, including processes arising from human activities and habitation patterns”

(UNCCD 1994, Article 1 of the Convention Text).

Linking land tenure and degradation: The role of cadastral data in supporting SDG 15.3.1 monitoring.

UNITED NATIONS COMMITTEE OF EXPERTS ON GLOBAL GEOSPATIAL INFORMATION MANAGEMENT

14 MAY 2025



The Spanish Cadastre

It is not merely an administrative register.

It constitutes a **fundamental governance tool** that enables:



The **articulation** of public policies.

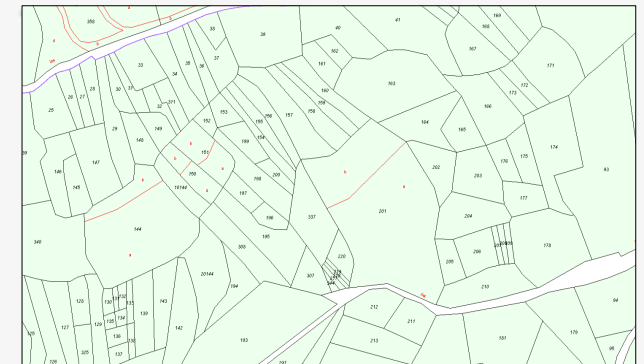
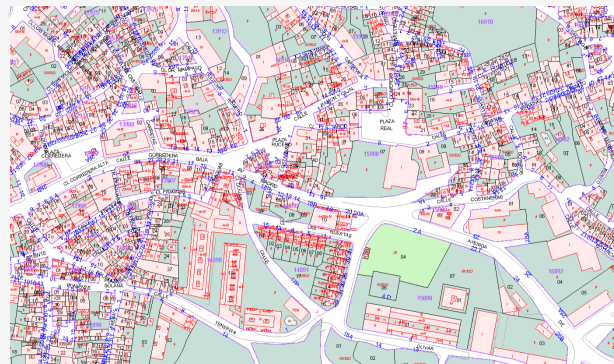
The **organization** of territory.

The **coordination of actions** between the Administration, citizens, and the land.

Linking land tenure and degradation: The role of cadastral data in supporting SDG 15.3.1 monitoring.

The Spanish Cadastre's main asset?

Its **extensive, detailed** and **continuously expanding** database.



UNITED NATIONS COMMITTEE OF
EXPERTS ON GLOBAL GEOSPATIAL
INFORMATION MANAGEMENT

14 MAY 2025

Linking land tenure and degradation: The role of cadastral data in supporting SDG 15.3.1 monitoring.

UNITED NATIONS COMMITTEE OF EXPERTS ON GLOBAL GEOSPATIAL INFORMATION MANAGEMENT

14 MAY 2025

The Spanish Cadastre's main asset?

Its **extensive, detailed** and **continuously expanding** database.

As of **January 2025:**

Nº de bienes inmuebles	
Nº de inmuebles urbanos	40.001.098
Nº de parcelas urbanas	14.092.154
Nº de inmuebles rústicos (parcelas)	38.816.468
Nº de inmuebles de características especiales	6.882
Nº de titulares de bienes inmuebles	
Nº titulares inmuebles urbanos y rústicos	29.294.042
Nº titulares de inmuebles urbanos	26.004.910
Nº titulares de inmuebles rústicos	8.992.360

Linking land tenure and degradation: The role of cadastral data in supporting SDG 15.3.1 monitoring.

UNITED NATIONS COMMITTEE OF EXPERTS ON GLOBAL GEOSPATIAL INFORMATION MANAGEMENT

14 MAY 2025

The cadastral database:

Provides us with **valuable examples** of the diverse approaches to **land protection**.

Activities aimed at ensuring effective land protection against **environmental threats**.



Linking land tenure and degradation: The role of cadastral data in supporting SDG 15.3.1 monitoring.

UNITED NATIONS COMMITTEE OF
EXPERTS ON GLOBAL GEOSPATIAL
INFORMATION MANAGEMENT

14 MAY 2025

The cadastral database:

An exemplary **representation** of these **activities**:

- 2021 La Palma **volcanic eruption**.
- 2024 Spanish **floods**.

Disaster management.

Evolution of affected buildings and crops.

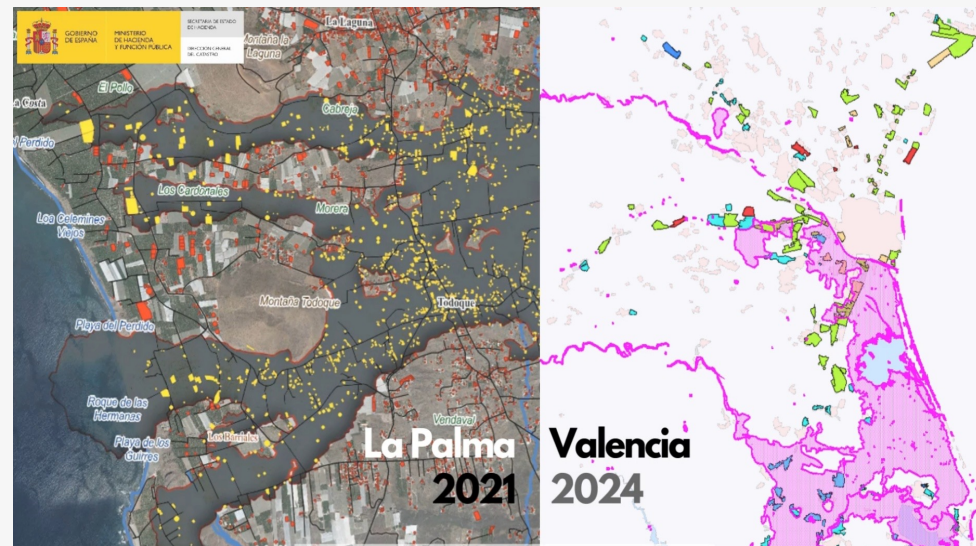
Linking land tenure and degradation: The role of cadastral data in supporting SDG 15.3.1 monitoring.

UNITED NATIONS COMMITTEE OF EXPERTS ON GLOBAL GEOSPATIAL INFORMATION MANAGEMENT

14 MAY 2025

The cadastral database:

An exemplary representation of these activities:



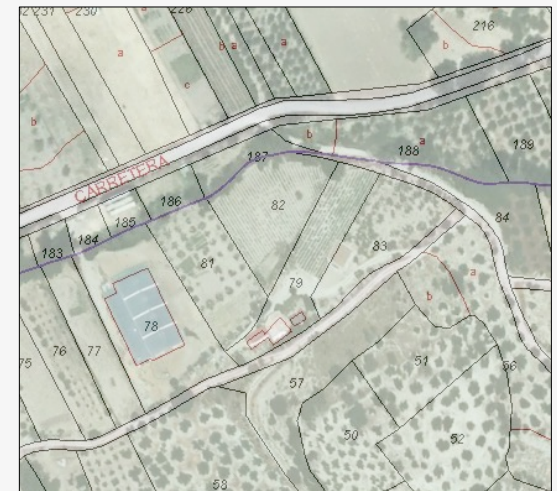
Linking land tenure and degradation: The role of cadastral data in supporting SDG 15.3.1 monitoring.

It is essential to remain open to new ideas:

Expanding the **information** compiled in the **database**.

Promoting **citizen collaboration** and involvement.

And, naturally, the **revolution** brought about by **AI**.



UNITED NATIONS COMMITTEE OF
EXPERTS ON GLOBAL GEOSPATIAL
INFORMATION MANAGEMENT

14 MAY 2025

Linking land tenure and degradation: The role of cadastral data in supporting SDG 15.3.1 monitoring.

**Thank
you
very much
for your
attention!**

UNITED NATIONS COMMITTEE OF
EXPERTS ON GLOBAL GEOSPATIAL
INFORMATION MANAGEMENT

14 MAY 2025

ALEJANDRO RODRÍGUEZ FRÍAS