

UN-GGIM: Europe

-

Outcome and findings of the Working Group on Data Integration



UN-GGIM: EUROPE

UNITED NATIONS INITIATIVE ON
GLOBAL GEOSPATIAL
INFORMATION MANAGEMENT

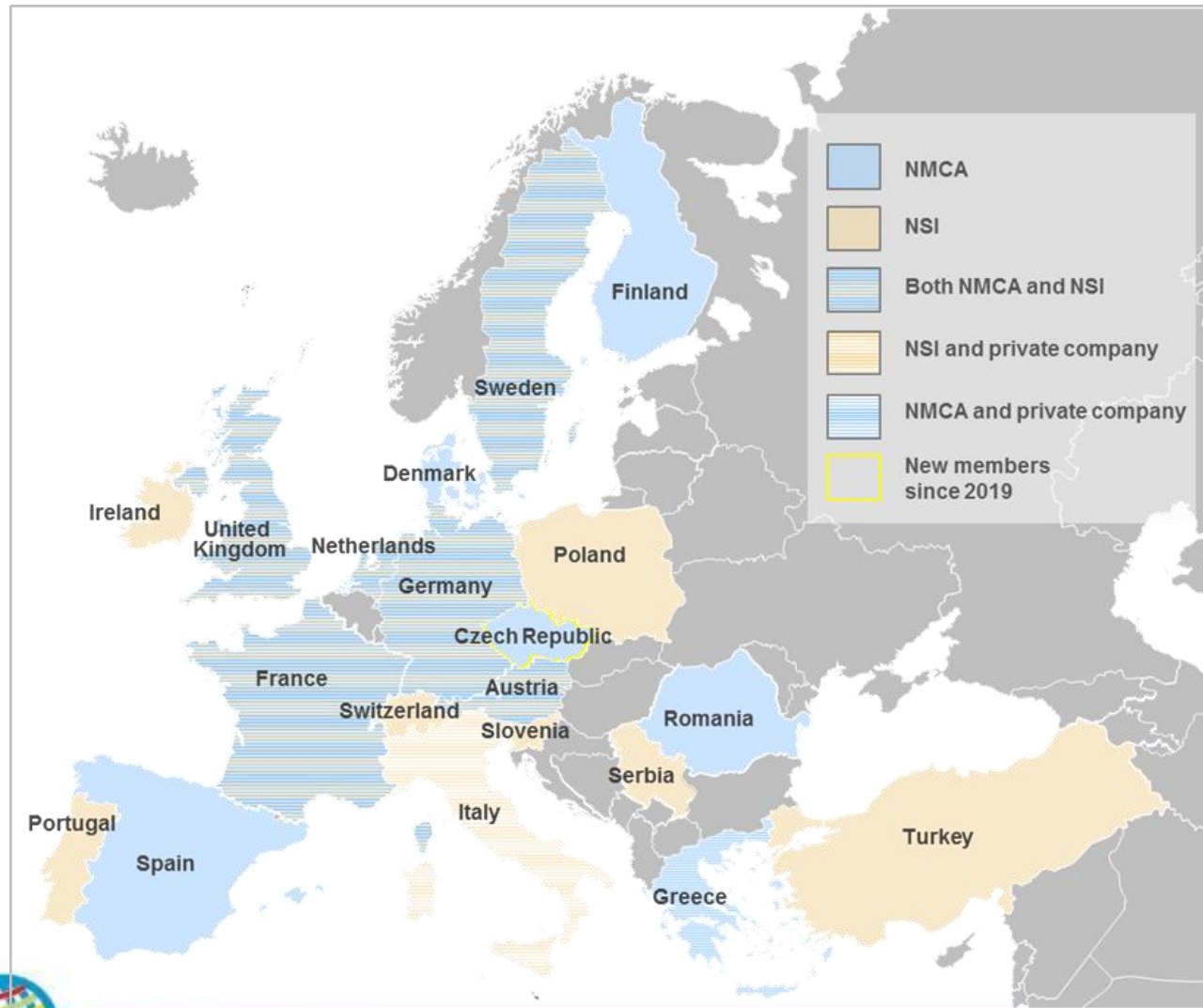
Pier-Giorgio Zaccheddu (Chair)

5 – 6 June 2019

Europe Regional Committee of UN-GGIM –
UN-GGIM: Europe, Brussels, Belgium



UN-GGIM: Europe Working Group on Data Integration



25 Members



UN-GGIM: EUROPE

UNITED NATIONS INITIATIVE ON
GLOBAL GEOSPATIAL
INFORMATION MANAGEMENT



UN-GGIM: Europe Working Group on Data Integration

1

Work plan 2014 – 2016

- ✓ B1: Definition of the priority user needs for data combinations
- ✓ B2: Recommendations for implementing prioritized combinations of data
- ✓ B3: Recommendations on how to manage side-effects

2

Work plan 2017 – 2019

- ✓ Task 1: Draft a policy outreach paper on data integration
- ✓ Task 2: Analyse four SDG indicators at a global, regional and national level

3

Work plan 2019 - 2022

- Concept 1: Analysing further SDG indicators
- Concept 2: Advisory group for data integration issues
- Concept 3: Analysing future trends in data integration



2

Work plan 2017 - 2019

Task 1 (Subgroup 1 – led by Eurostat):

Policy Outreach Paper & Leaflet

- ✓ Promote the benefits of the integration of statistical and geospatial data
- ✓ Make use of recommendations from deliverables on priority user needs, interoperability frameworks, cooperation and methods for data integration and side effects

Task 2 (Subgroup 2 – led by Portugal):

Analyse new global, regional or national indicators

- ✓ Meet the Sustainable Development Goals 2030
- ✓ Reflect the European perspective (INSPIRE, Copernicus)
- ✓ Reflect data integration aspects



2

Work plan 2017 - 2019

Task 1

Questionnaire & Policy Outreach Paper & Leaflet

Questionnaire

- ✓ provided information on data integration

https://un-ggim-europe.org/wp-content/uploads/2019/03/2019-02-06_UNGIM-Europe_ReportQuestionnaire_v2.pdf

Policy Outreach Paper

- ✓ Promotes the benefits of data integration
- ✓ Recommendations on data integration

→ To be published soon

Leaflet

- ✓ Strengthen information
- ✓ Effective examples of data integration

→ To be published soon

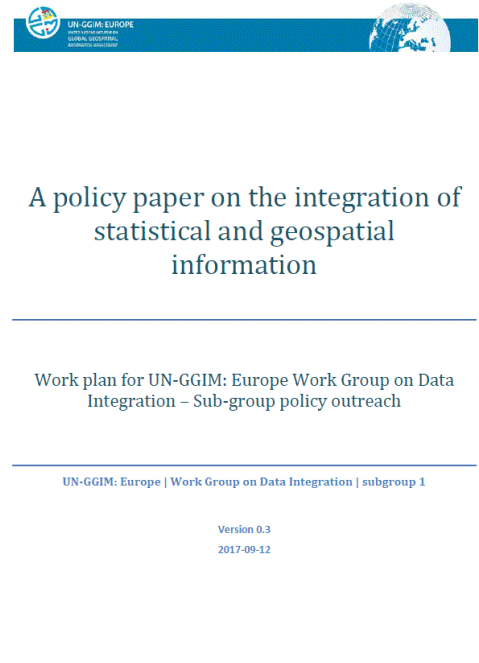


2

Policy Outreach Paper

Task 1

- ✓ to guide and recommend on how to improve data integration
- ✓ to address the challenges and obstacles for full integration of data
- ✓ to achieve the UN Sustainable Development Goals
- ✓ Recommendations
 - Strengthen institutions and governance is crucial!
 - Standards, quality and accessibility are fundamental prerequisites!
 - Communication is the key for improvement!



2

Leaflet

Task 1

Leaflet

- ✓ to present examples for effective data integration
- ✓ Strengthen the information from the policy paper
- ✓ Example from the Netherlands: Hurricane Irma in 2017

CONNECTED PLACES, SMILING FACES
Places create energy. Energy that is addictive. People want to be part of it. How to?

When cities prosper, you want to enjoy the ride. Prosperity comes in many forms, economic, growth, a clean and livable habitat, a social and safe environment, you name it. And can only be guaranteed when the ride itself contributes to this experience heavily.

When cities prosper, their infrastructures and transportation needs to keep the pace. Otherwise traffic, fixes origins and life comes to a halt. Causing frustration, pollution and loss of time and money, sad face.

"Economic growth, and a livable habitat, that's what we want!"

Smiling faces is what we want. Smooth traffic, smooth transport. Smooth public transport contributes to the traffic flow in the city. So you need to know where traffic runs well and where bottlenecks appear.

Insight in the situation on the road can help you to optimize your efforts. You need information that is accessible, reliable and understandable. Thanks to technology a lot of existing place related information can be compared and shared.

Your national statistical offices and mapping agencies unleash potential, supporting your decision making when it comes to smooth streams of traffic. And much more...

A cleaner environment, boosting energy, making you smile.

Indeed, when situations demand it, even small, well-timed mapping can relieve the most urgent situations... and provide urgent humanitarian aid at the right place... And when every second counts.

So, right and trusted information is essential to mobilize aid. Even better... when information is visualized. Good and reliable maps are an essential part in connecting the dots and are a substantial part of the solution. Location related information that is trusted, made the difference. Maps pictured the situation, providing needed overview and insight. Enabling connection with the real world, a necessary ally. Maps, assembled by bringing available sources together.

"Right and trusted information is essential to mobilize aid!"

So was the case at the recent emergency situation at the island of St. Maarten, situated in the Caribbean. Hurricane Irma hit hard in September last year, making life difficult and scattering communities in a split second. Fast mobilization of aid was needed.

But where to go, where to start, when to deliver emergency aid where it was most needed? The Red Cross and organizations and the authorities could only do their work effectively when easy answers could be given to many questions.

National mapping and cadastre agencies and statistical offices combine their strengths to provide you with needed information, enabling trusted decision making. In everything happens somewhere, it is an integrated information that brings you further.

And integrated is the approach as well. Working actively together with stakeholders from different sectors, be it health, social development or education is the natural way forward. Involvement of technology developers, entrepreneurs as well as the communities themselves is key to understanding.



St. Maarten, Caribbean



2

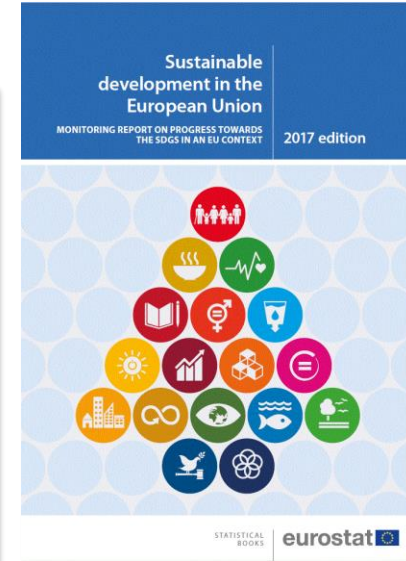
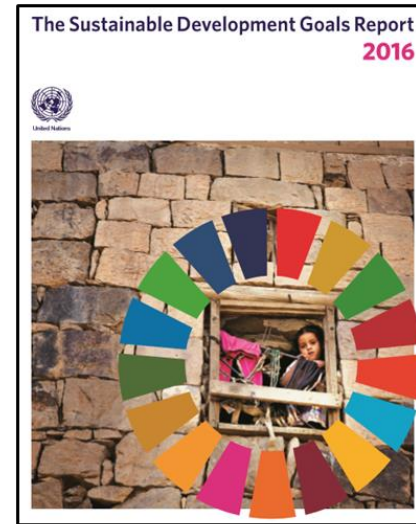
Work plan 2017 - 2019

Task 2

Analyse global, regional or national indicators

Check and assess (1) methodology and (2) data availability

- ✓ Systematization of global “metadata” for indicators and national practices
- ✓ Indicate EU-SDG indicators potentially benefiting from geospatial information
- ✓ Additional national specific indicators benefiting from geospatial information and its combination with statistical data, defined within the context of national SDG monitoring



2

Selected SDG indicators

Task 2



11.2.1 tier II indicator

Proportion of population that has convenient access to public transport, by sex, age and persons with disabilities

Indicator coordinator: Austria (NSI)

Contributors: Austria (NSI), France (NMCA), Ireland (NSI), Sweden (NSI), Switzerland (NSI)



11.3.1 tier II indicator

Ratio of land consumption rate to population growth rate

Indicator coordinator: Portugal (NSI)

Contributors: Finland (NMCA), Ireland (NSI), Italy (e-GEOS), Portugal (NSI and NMCA)



11.7.1 tier III indicator (currently tier II)

Average share of the built-up area of cities that is open space for public use for all, by sex, age and persons with disabilities

Indicator coordinator: Sweden (NSI)

Contributors: Ireland (NSI), Sweden (NSI and NMCA), Switzerland (NSI)



15.1.1 tier I indicator

Forest area as a proportion of total land area

Indicator coordinator: Italy (e-GEOS)

Contributors: Austria (NMCA), Finland (NMCA), France (NMCA), Germany (NMCA), Italy (e-GEOS), Spain (NMCA)



2

Final Report

Task 2

https://un-ggim-europe.org/wp-content/uploads/2019/05/UN_GGIM_08_05_2019-The-territorial-dimension-in-SDG-indicators-Final.pdf



UN-GGIM: EUROPE

UNITED NATIONS INITIATIVE ON
GLOBAL GEOSPATIAL
INFORMATION MANAGEMENT



UN-GGIM: Europe Working Group on Data Integration

1

Work plan 2014 – 2016

- ✓ B1: Definition of the priority user needs for data combinations
- ✓ B2: Recommendations for implementing prioritized combinations of data
- ✓ B3: Recommendations on how to manage side-effects

2

Work plan 2017 – 2019

- ✓ Task 1: Draft a policy outreach paper on data integration
- ✓ Task 2: Analyse four SDG indicators at a global, regional and national level

3

Work plan 2019 - 2022

- Concept 1: Analysing further SDG indicators
- Concept 2: Advisory group for data integration issues
- Concept 3: Analysing future trends in data integration



3

Work plan 2019 - 2022

Concept 1

Analysing further SDG indicators

- focusing on “environmental” SDGs and earth observation
- including as part of a sub-task ‘Requirements and practices from National Statistical Offices for the use of earth observation data for national statistics’

Concept 2

Advisory Group for global and European data integration issues

- e.g. contribution to UN-GGIM (global) issues like the *Integrated Geospatial Information Framework (IGIF)*...

Concept 3

Analysis of (future) trends in data integration

- data capture, creation, maintenance and management
- using Linked (Open) Data methods to enhance data integration



3

Work plan 2019 - 2022

Concept (optional)

Post-Census 2020 activities?

- Support Post-Census 2020 activities and use synergies with UNECE/WG Data Integration
- Start sketching out preliminary plans and clarification as a subsidiary task for the group, but then how to manage it...?

... be best to discuss with UNECE to flesh out the work for 2022...



UN-GGIM: EUROPE

UNITED NATIONS INITIATIVE ON
GLOBAL GEOSPATIAL
INFORMATION MANAGEMENT



Related activities supporting the work plan

IAEG-SDGs Working Group on Geospatial Information

Inter-agency Expert Group on SDG Indicators



Co-Chairs



Sweden

Ms. Marie Haldorson



Mexico

Ms. Paloma Merodio Gomez

Task Streams

- disaggregation by geographic location and aggregation of geocoded unit level data;
- appropriate means to allow NSIs to uptake appropriate analysis or the use of production ready satellite time series data contributed by space agencies

Short list of "geospatial" indicators

- http://ggim.un.org/meetings/2017-4th_Mtg_IAEG-SDG-NY/documents/WG's_Initial_Shortlist-Table_A_B.pdf



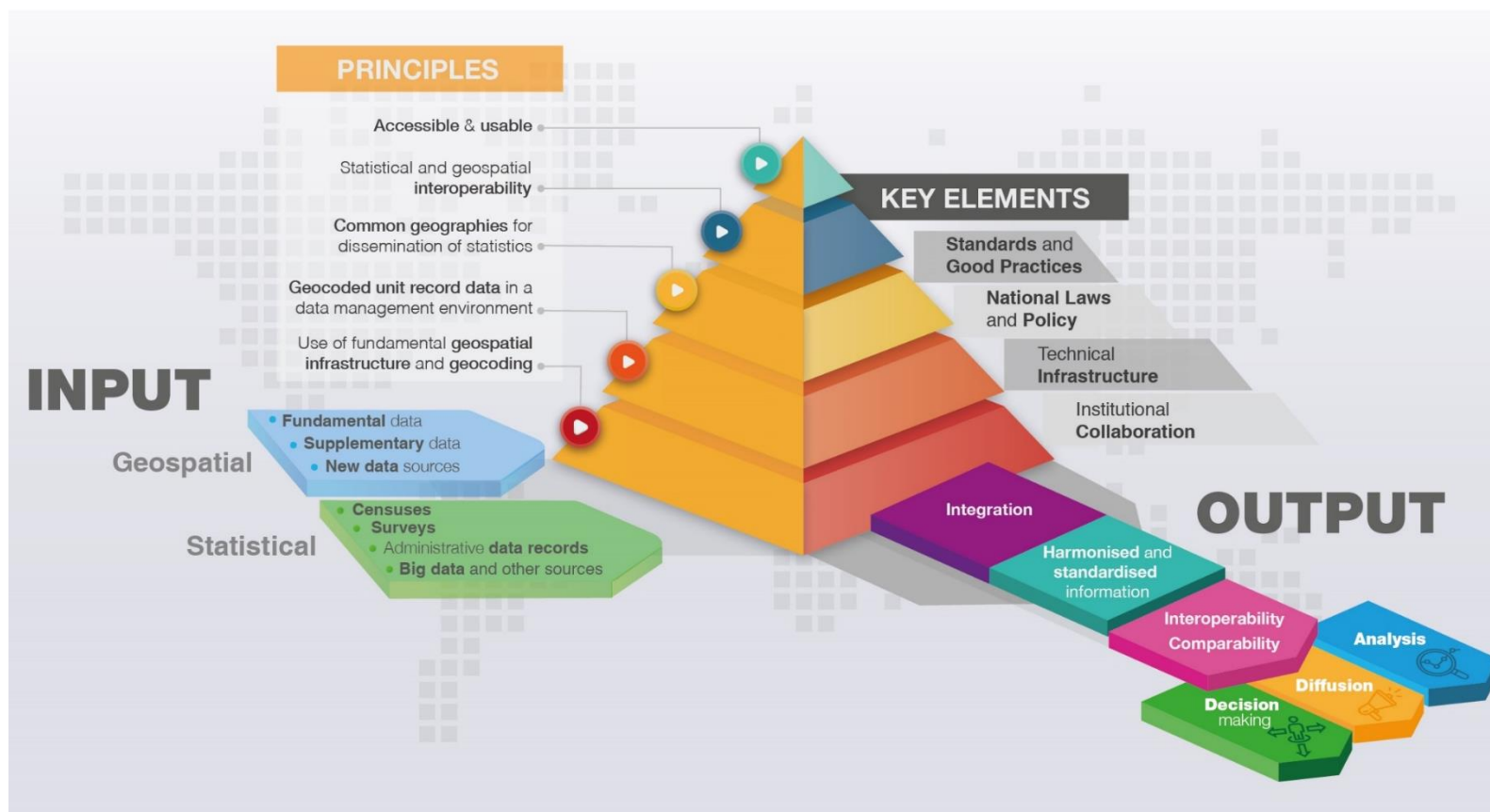
UN-GGIM: EUROPE

UNITED NATIONS INITIATIVE ON
GLOBAL GEOSPATIAL
INFORMATION MANAGEMENT



Related activities supporting the work plan

UN Expert Group on the Integration of Statistical and Geospatial Information (EG ISGI) Global Statistical and Geospatial Framework (GSGF)



UN-GGIM: EUROPE

UNITED NATIONS INITIATIVE ON
GLOBAL GEOSPATIAL
INFORMATION MANAGEMENT



Related activities supporting the work plan

Project GEOSTAT-3

Objective: Project funded by Eurostat to develop a European version of the GSGF and to test SDG indicators

✓ Work Package 1:

Contribute to the improvement of the Global Statistical and Geospatial Framework (GSGF) and – particularly – the development of a European version of it

★ Involvement of UN-GGIM: Europe WG Core Data and WG Data Integration

✓ Work Package 2:

Test SDGs selected by WG on Data Integration

★ National test reports using the gap analysis of UN-GGIM WG Data Integration

★ Evaluation of the tests



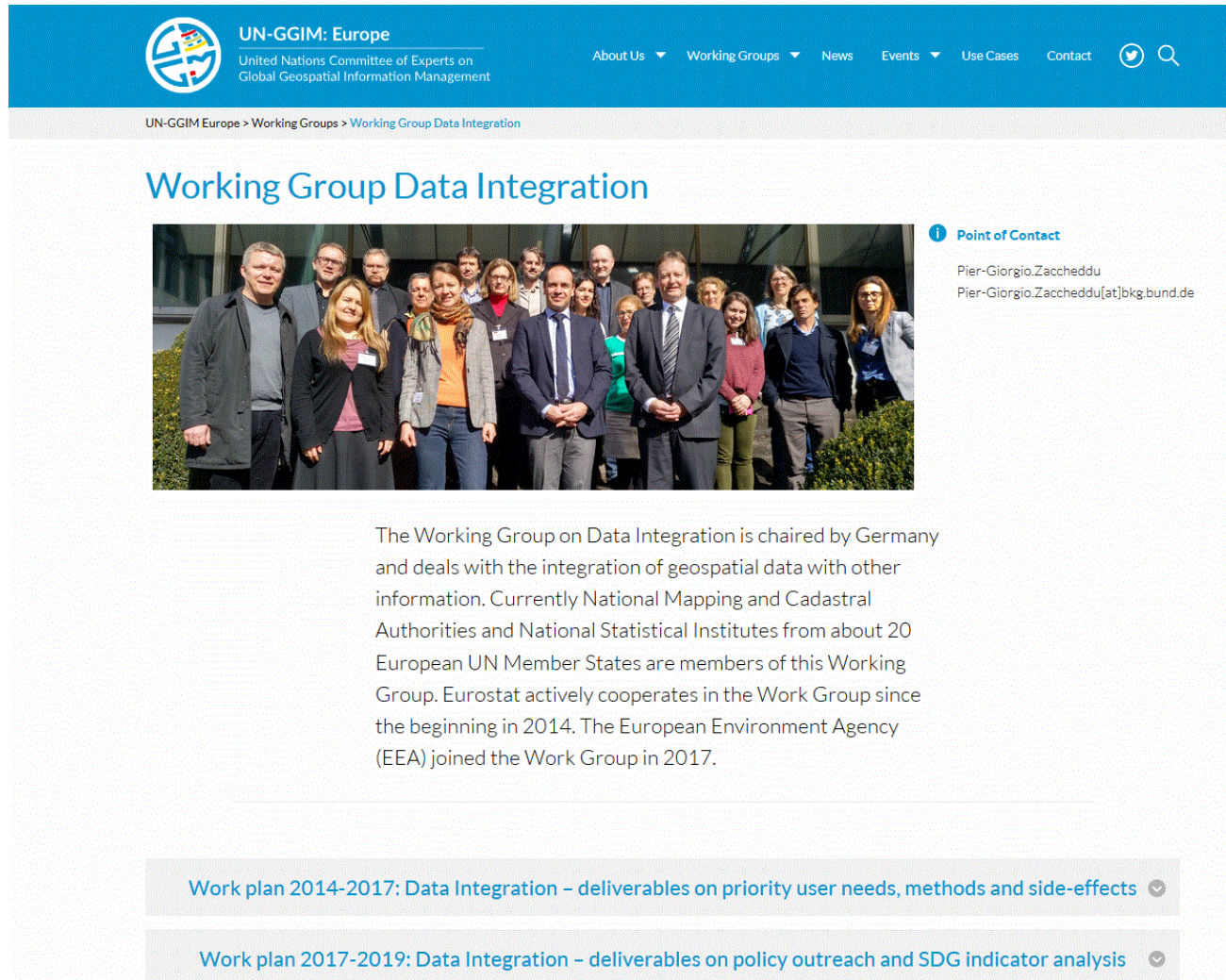
The future remains interesting...

Next steps

- Promote the Policy Outreach Paper (comprising the leaflet) and the final report on the SDG indicators
- Further elaborate, consolidate and agree upon the new work items for the Work Group
- Continuously contribute to global data integration issues addressed by the IAEG SDG WG GI
- Continuously contribute to data integration issues addressed by the UN EG ISGI and to future GEOSTAT-projects (if deemed appropriate)



The main communication platforms...




The screenshot shows the website for the UN-GGIM Europe Working Group Data Integration. The header includes the UN-GGIM Europe logo and navigation links: About Us, Working Groups, News, Events, Use Cases, Contact, and social media icons. The breadcrumb trail reads: UN-GGIM Europe > Working Groups > Working Group Data Integration. The main heading is "Working Group Data Integration". Below it is a group photo of the working group members. To the right of the photo is a "Point of Contact" section for Pier-Giorgio Zaccheddu, with his email address: Pier-Giorgio.Zaccheddu[at]bkg.bund.de. A paragraph of text describes the group's focus on integrating geospatial data with other information, listing members from 20 European UN Member States and Eurostat. At the bottom, there are two links to work plans: "Work plan 2014-2017: Data Integration – deliverables on priority user needs, methods and side-effects" and "Work plan 2017-2019: Data Integration – deliverables on policy outreach and SDG indicator analysis".

UN-GGIM: Europe
United Nations Committee of Experts on
Global Geospatial Information Management

About Us Working Groups News Events Use Cases Contact

UN-GGIM Europe > Working Groups > Working Group Data Integration

Working Group Data Integration



Point of Contact
Pier-Giorgio.Zaccheddu
Pier-Giorgio.Zaccheddu[at]bkg.bund.de

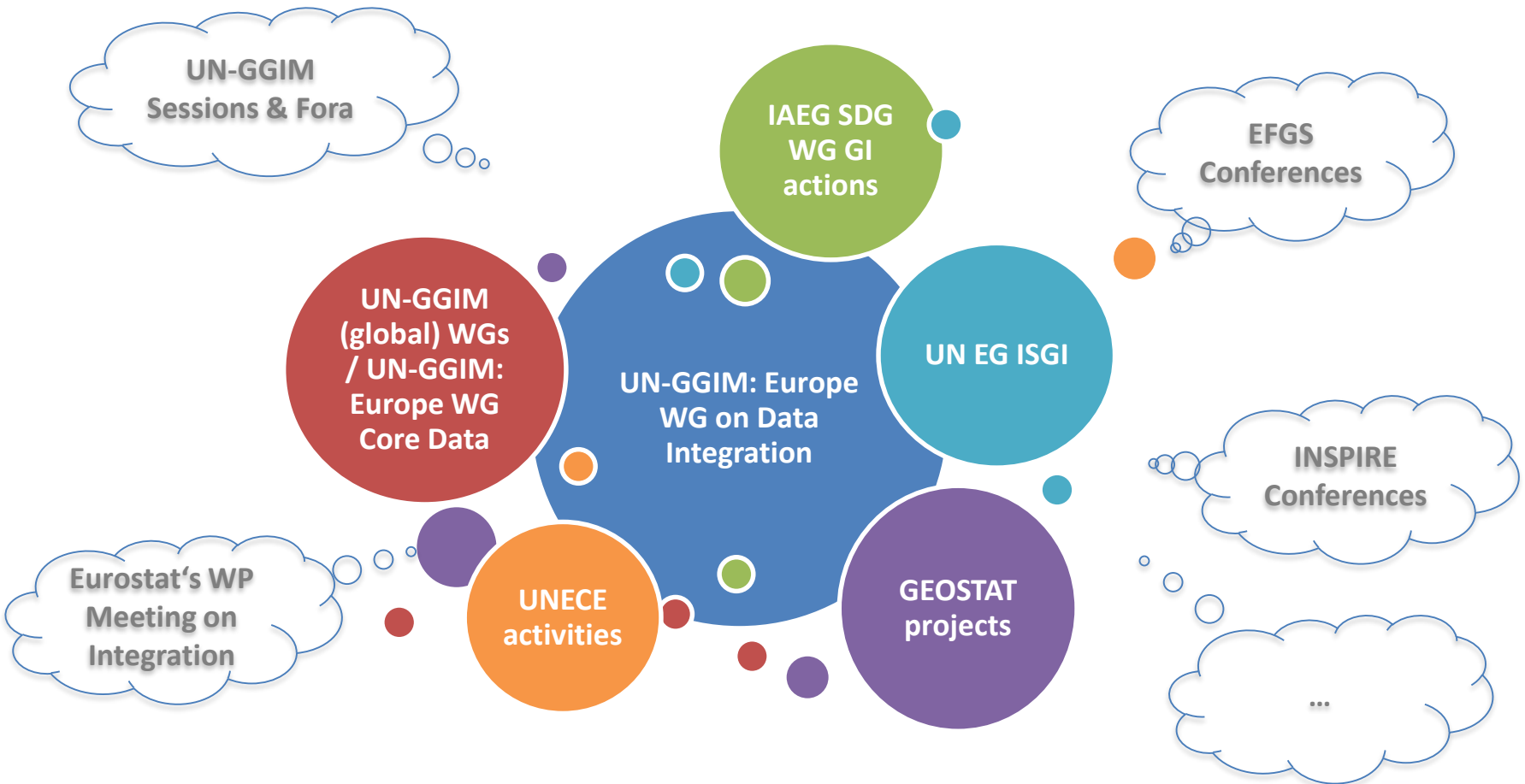
The Working Group on Data Integration is chaired by Germany and deals with the integration of geospatial data with other information. Currently National Mapping and Cadastral Authorities and National Statistical Institutes from about 20 European UN Member States are members of this Working Group. Eurostat actively cooperates in the Work Group since the beginning in 2014. The European Environment Agency (EEA) joined the Work Group in 2017.

Work plan 2014-2017: Data Integration – deliverables on priority user needs, methods and side-effects

Work plan 2017-2019: Data Integration – deliverables on policy outreach and SDG indicator analysis



The main communication platforms...



UN-GGIM: EUROPE

UNITED NATIONS INITIATIVE ON
GLOBAL GEOSPATIAL
INFORMATION MANAGEMENT



Questions?

Chair: Pier-Giorgio Zaccheddu

Contact: UN-GGIM: Europe, WG on „Data Integration“:

pier-giorgio.zaccheddu@bkg.bund.de



UN-GGIM: EUROPE

UNITED NATIONS INITIATIVE ON
GLOBAL GEOSPATIAL
INFORMATION MANAGEMENT

